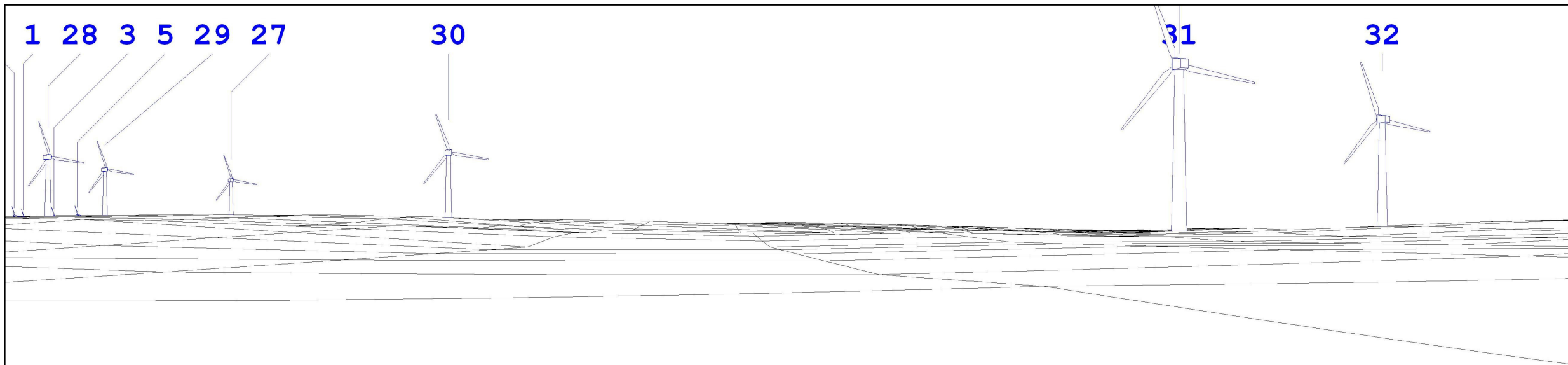
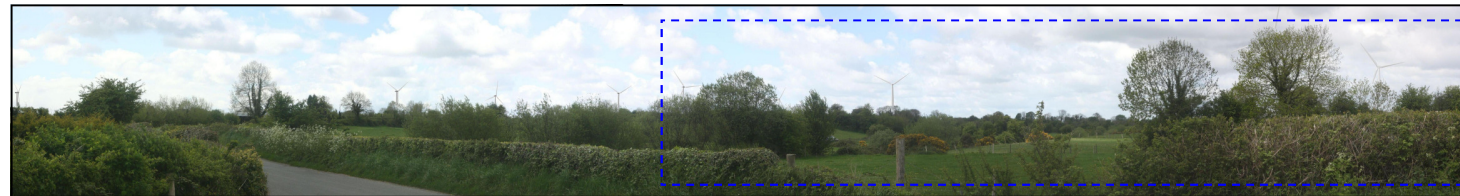




Partial Photomontage View (PV)



Partial Wireframe View (PV)



Full Photomontage View — Contextual

Yellow River WF
 Mount Lucas WF

LC1 (B): Baltinoran Grid Reference: 255,398E 240,839N	DISTANCE TO NEAREST TURBINE Approx. 0.9 km	Client: Greenwind Energy Ltd.		Turbine Dimensions Hub height: 110m Blade Length: 56m Tip Height: 166m	
	DIRECTION TO SITE: W VIEWING DIST: 580mm @ A1 (PV) INCLUDED ANGLE: 64° (PV)	Stage: Planning			
WINDFARM LEGEND: Wind Turbine	Camera: Canon EOS 1000D Lens Focal Length: 55mm Camera Height: 1.8m above GL	Project: Proposed Yellow River Wind Farm, Co. Offaly	Copyright of Jennings O'Donovan & Partners and Ordnance Survey Ireland.		